

SURGITRON[®] DUAL EMC 90

Advanced 4.0 MHz Radiofrequency Technology

PRECISION • VERSATILITY



ellman[®]
Experts in Precision Surgery.

Surgitron® Dual EMC 90 Energy Source

With over **50 years of experience**, over 70 patents and more than 200 journal articles, Ellman is your trusted worldwide partner for surgical products and services.

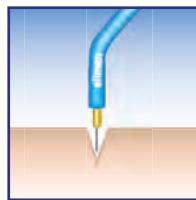
The Surgitron® Dual EMC 90 unit represents advanced radiofrequency technology that provides unparalleled surgical control, **precision**, **versatility** and **safety**. The high frequency of 4.0 MHz minimizes heat dissipation and thus cellular alteration.

Five Distinct Waveforms for Optimum Results

1. Fully Filtered (Cut)



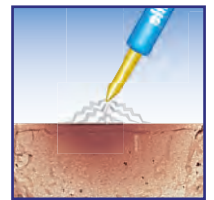
- Micro-smooth cutting
- Negligible lateral heat
- Minimal cellular destruction
- Best cosmetic results. Fastest healing^{4,5}
- Ideal for skin incision and biopsy
- 4.0 MHz



4. Fulguration



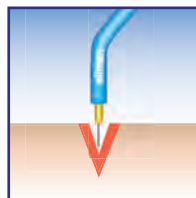
- Maximum hemostasis
- Ideal for intentional tissue destruction
- 4.0 MHz



2. Fully Rectified (Cut/Coag)

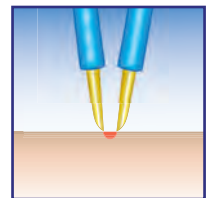


- Cutting with hemostasis
- Ideal for sub-cutaneous tissue dissection and planing. Especially useful in vascular areas while producing minimal amounts of lateral heat and tissue damage
- 4.0 MHz

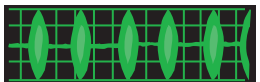


5. Bipolar

- Pinpoint, micro-coagulation
- Minimal charring or tissue necrosis
- Ideal for coagulation in and around critical anatomy
- 1.7 MHz



3. Partially Rectified (Hemo)



- Coagulation / Shrinkage
- Ideal hemostasis with controlled penetration
- For cutting with maximum hemostatic control
- 4.0 MHz



Clinical Citations

1. Olivar, A.C., et al, *Ann Clin Lab Sci.* (1999); 29(4): p281-5.
2. Data on file.
3. Niamtu, J., Chapter 4B, "Radiowave Surgery in Oral and Maxillofacial Surgery", in Bell, W., et al, *Distraction Osteogenesis of the Facial Skeleton*, 2007, p30-37.

4. Bridenstine, J.B., *Derm Surgery* (1998); vol 24, p397-400.
5. Ericsson, E., et al, *The Laryngoscope* (2007); vol 117, p654
6. Aferzon, M, *Derm Surgery* (2002); vol 28, p735-738
7. Eremia, S., et al, *Dermatol Surg* (2001); 27: p1052-1054.

Distinct Benefits for Your Practice and Your Patients

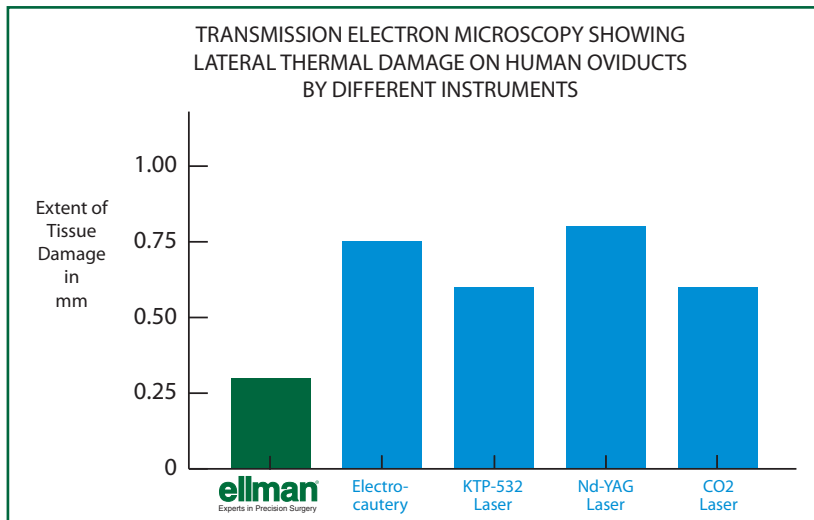
- **Precision** – create precise incisions in a variety of tissue structures³
- **Versatility** – no other energy-based technology has the surgical versatility of Ellman²
- **Quick Recovery** – with less tissue destruction, healing is hastened and your patients can recover quickly⁴
- **Decreased Post-Operative Pain** - 4.0 MHz causes less trauma⁵
- **Decreased Post-Surgical Edema** - low temperature equals less tissue destruction⁶
- **Less Burning or Charring of Tissue** – 4.0 MHz minimizes burning of tissue, unlike laser or conventional lower frequency electrosurgery¹

Features

- **Dual Frequency** combining two optimized frequencies – Monopolar (4.0 MHz) and Bipolar (1.7 MHz) for maximum surgical benefits – for outstanding precision and control
- **Digital Control Panel** facilitates easy operation and a clear view of settings
- **Solid State Circuitry** for dependable and consistent energy emission
- **Safety Indicators** provide visual and auditory alerts
- **Parameter Recall** allows rapid set-up for subsequent procedures

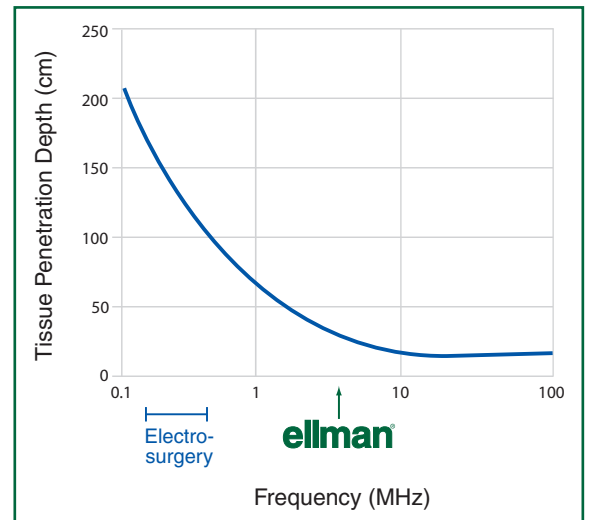


4.0 MHz Minimizes Lateral Thermal Damage and Maximizes Precision



Reference - Olivar, AC, et al, Ann Clin Lab Sci. 1999 Oct-Dec; 29(4): p281-5.

- Ellman radiofrequency technology produces one-third the lateral thermal damage as compared to conventional electrosurgery
- Ellman radiofrequency technology produces one-half to one-third of the lateral thermal damage versus most lasers



Source: Golio, JM, et al, "RF and Microwave Applications and Systems", The RF and Microwave Handbook, p21-2.

Shown with Surgitron® Dual EMC 90, Surg-e-Vac™ and Cart

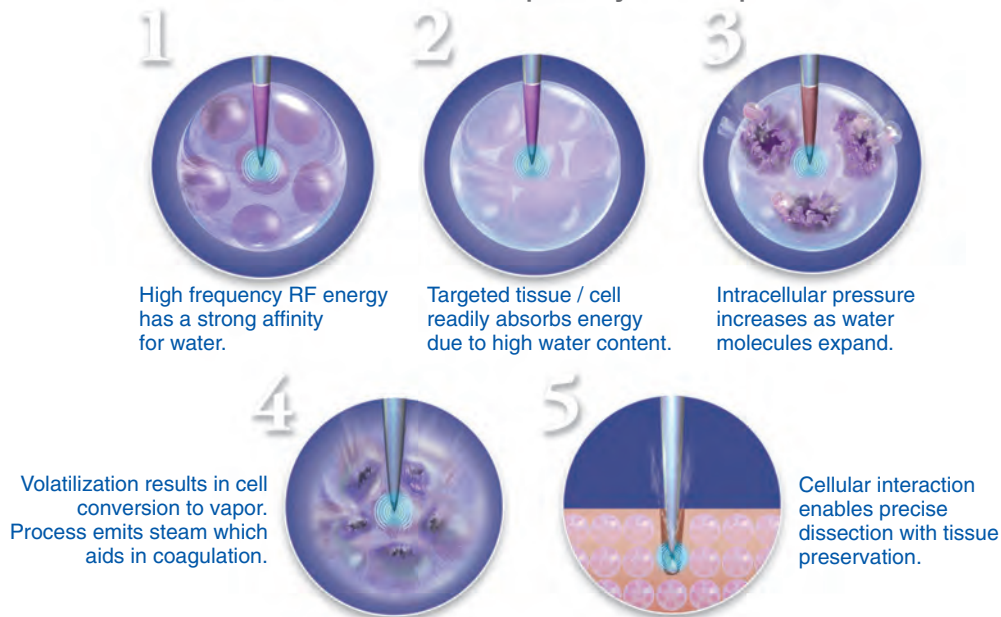
Surgitron® Dual EMC 90 Specifications

Product Code: IEC3A-S30-90	
Description: Surgitron® 4.0 Dual RF™/90 IEC	
Dimensions	Output frequency
Height: 5 inches	4.0 MHz Monopolar
Width: 9 inches	1.7 MHz Bipolar
Depth: 13 inches	Line Frequency
Weight: 18 lbs	50 - 60 Hz
Line Voltage	
110/120/220/240 volts	
Output Power	
Monopolar Cut: 90 Watts	
Monopolar Cut/Coag: 65 Watts	
Monopolar Hemo: 45 Watts	
Monopolar Fulgurate: 35 Watts	
Bipolar: 90 Watts	



How Our Patented Radiofrequency Technology Works

Cellular Radiofrequency Absorption



ellman® International, Inc. 3333 Royal Avenue, Oceanside, N.Y. 11572-3625 U.S.A.

(800) 835-5355 • (516) 594-3333 • Fax: (516) 569-0054 • www.ellman.com

Note: Do not copy or distribute without written authorization from Ellman International, Inc.

© 2012 ellman® International, Inc.

CC12053A

CE
0413